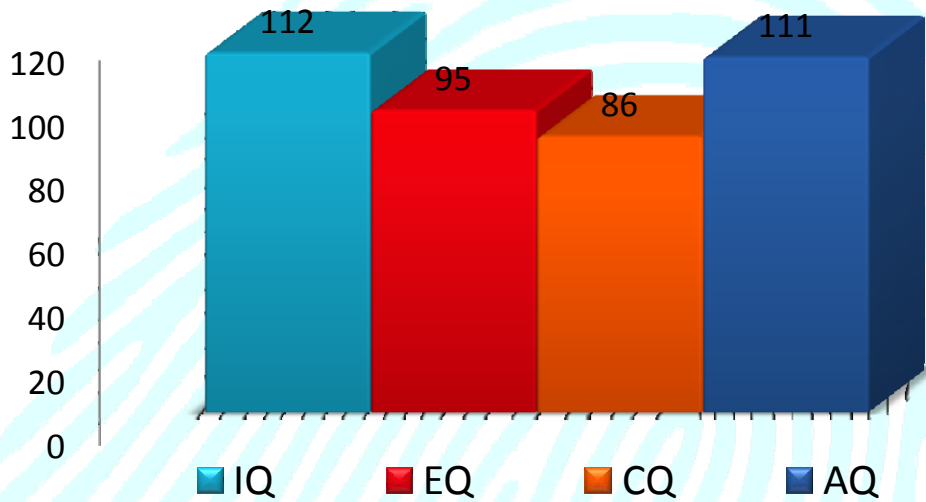


MY QUOTIENTS



INTELLIGENCE QUOTIENT (IQ)

Ability to reason and think.
 Predictor of academic performance.
 Ability to manage numbers.
 Ability to analyze.
 Ability to apply logic, language and grammar.
 High IQ doesn't mean more intelligent/visa-versa.

EMOTIONAL QUOTIENT (EQ)

Ability to understand and manage self & others emotions.
 High EQ make you a man of management.
 Predictor of your Emotion Management.
 Directly proportional to your managerial skills.

CREATIVE QUOTIENT (CQ)

Ability to understand music & art.
 Predictor of your creativity.
 High CQ makes you a man of Painting & Dance.
 Out of the box thinking.
 Doing something different better & new.

ADVERSITY QUOTIENT (AQ)

Ability to handle tough situations.
 Pain taking capacity.
 Mentally strong people.
 Tough mind set.
 Never give up attitude.
 Situation fighter.
 High energy level.